

# Sweet Nightingale

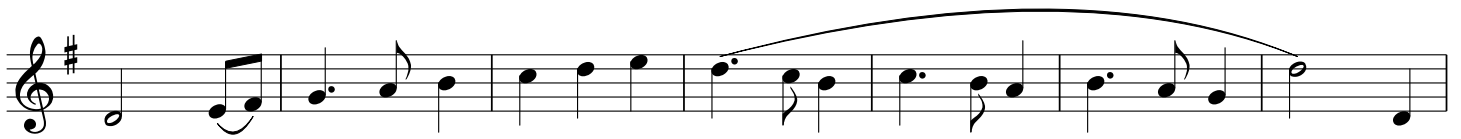
Trad. Cornish Song



'Pret - ty maid, come a - long! Don't you hear the sweet song, How the notes of the  
Don't you hear the fond tale Of the sweet night - in - gale, As she sings in those



night - in - gale flow? So be not a - fraid To walk in the  
val - leys be - low?



shade, Nor yet in those val-leys be - low, Nor



yet in those val-leys be - low.